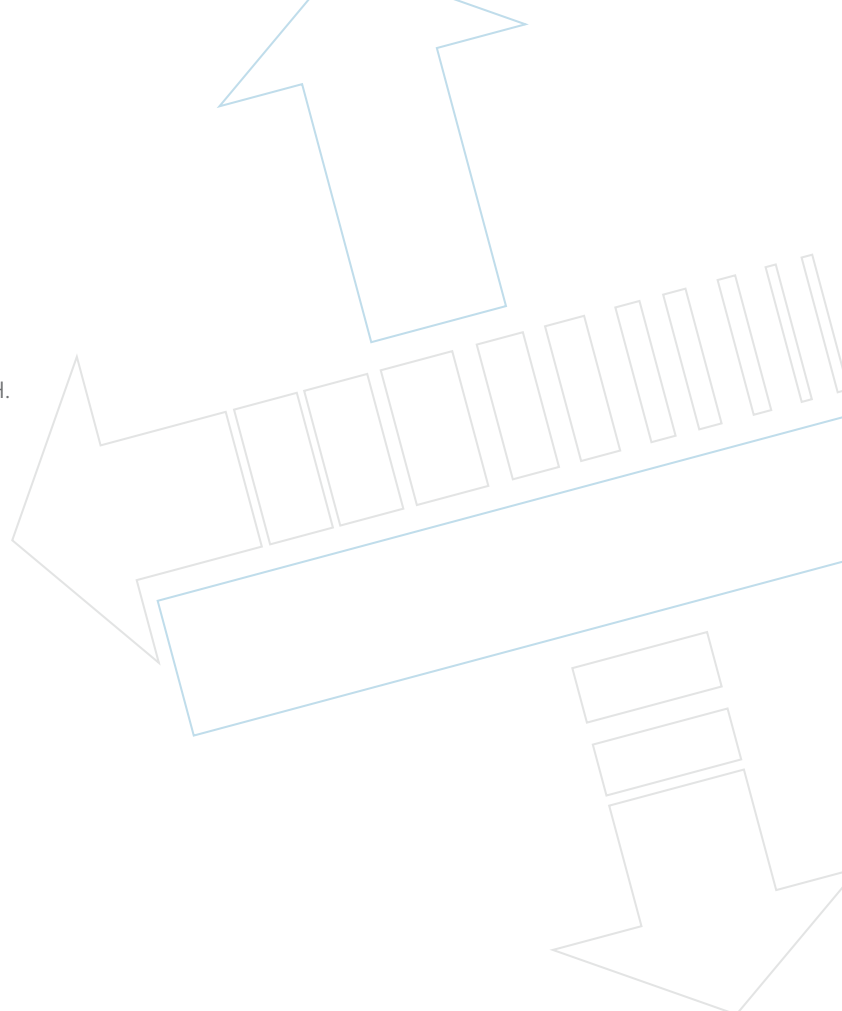




CENTRE FOR RESEARCH AND TECHNOLOGY HELLAS | CE.R.T.H.



HELLENIC INSTITUTE OF TRANSPORT | H.I.T.



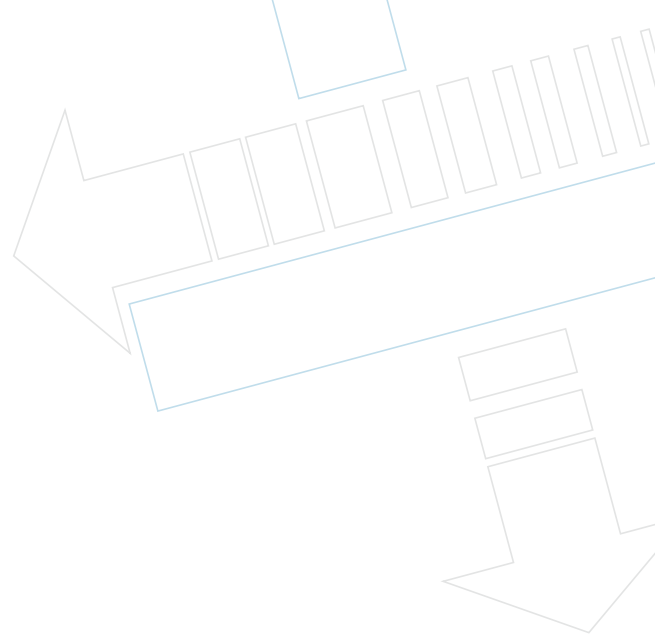
HELLENIC INSTITUTE OF TRANSPORT ANNUAL REPORT 2010



JANUARY 2011

HELLENIC INSTITUTE OF TRANSPORT

6th km Charilaou - Thermi road | P.O. Box 361 | GR-570 01 Thermi - Thessaloniki
T: +30 2310 498 263 | F: +30 2310 498 269 | E: hit@certh.gr | W: www.hit.certh.gr



HELLENIC INSTITUTE OF TRANSPORT
ANNUAL REPORT 2010

JANUARY 2011

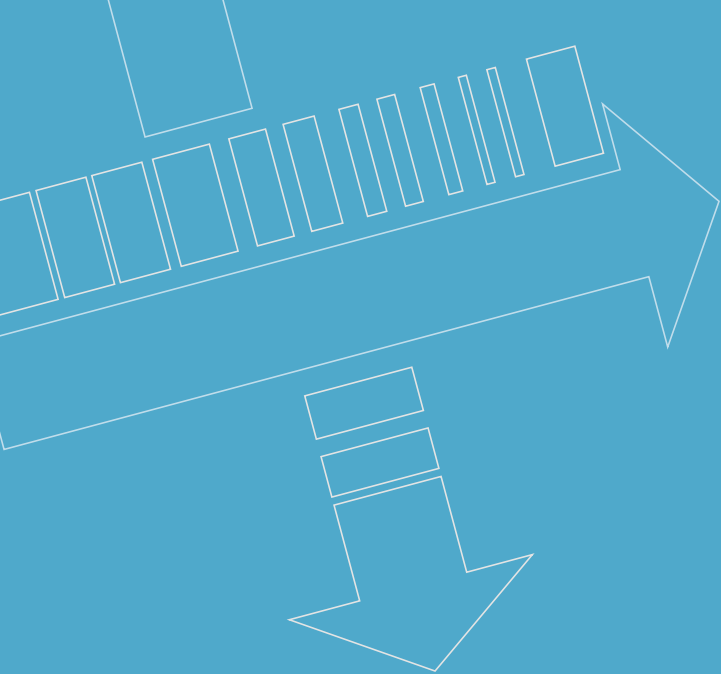


TABLE OF CONTENTS

| | |
|---|----|
| DIRECTOR'S MESSAGE | 3 |
| 2010 HIGHLIGHTS | 5 |
| LEGAL STATUS | 7 |
| H.I.T.'s MISSION | 7 |
| PREMISES | 7 |
| THE INSTITUTE'S STRUCTURE | 8 |
| MANAGEMENT | 10 |
| FINANCIAL REPORT | 13 |
| RESEARCH INFRASTRUCTURES | 14 |
| SCIENTIFIC WORK | 17 |
| ACTIVITIES IN EDUCATION AND TRAINING | 25 |
| NATIONAL AND INTERNATIONAL PARTERSHIPS AND PROMOTIONAL ACTIVITIES | 26 |
| INTERNATIONAL RECOGNITION OF HIT'S PERSONEL | 29 |
| TABLE OF ACTIVE PROJECTS 2010 | 30 |
| 2010 PUBLICATIONS | |



Director's Message

Prof. G. Giannopoulos

The Hellenic Institute of Transport, mature and recognized in the Greek and European research space as a center of excellence, continued this year its scientific and research activities in all areas.

Despite the economic crisis which in 2010 started making its presence fully felt in the research area too, the dynamics of HIT both as regards the number of researchers and the number of projects has been sustained, though with a modest drop in revenue. This reduction in our turnover, was due to the general economic uncertainty and the major reductions in budgets and turnovers for the majority of our clients in Greece.

In the positive developments of 2010, we would primarily include the completion and moving in to our new office and laboratory building in the CERTH Headquarters in Thessaloniki. HIT has now a state-of-the-art building, housing offices and laboratories as well as a small amphitheater and meeting rooms, which is expected to facilitate our operation greatly. Also during 2010 we increased our research infrastructure by the acquisition of 2 more hybrid scooters and other research equipment.

We also continued to expand and enrich the content and functionality of our Internet based system offering information and data as well as specialized software in the field of Transport, known as "KOMVOS" (Node) of HIT. The infrastructure and the content of this web portal are unique in Greece and are expected to provide a major tool for transport research in the country. This major contribution of HIT to promoting transport research is expected to be fully operational in 2011.

In the pages of this Annual report the interested reader will find all the necessary information concerning our Institute and its activities in 2010. It would be our pleasure to give you more information and details should this be necessary.

G. Giannopoulos

2010 Highlights

INAUGURATION OF H.I.T.'s NEW OFFICE BUILDING

The 10th anniversary of the establishment of HIT coincided in 2010 with the inauguration of the new office building of the Institute in the Technologi-

cal Park of Thessaloniki. The occasion was celebrated officially on January 2010 in a special ceremony, held in the headquarters of CERTH in Thessaloniki attended by more than 150 people.



In his opening remarks the Director of HIT focused on the ten year of progress of the Institute and the milestones achieved, and commended the members of H.I.T. for their contributions. The EU representative and keynote speaker was Mr. D. Theologitis (DG MOVE) who focused his presentation on the new developments in the EU transport policy.

The event was followed by the inauguration of the new building by MP Mr. Sp. Vougiaris, then Deputy Minister of Citizen Protection and Mrs. M. Lioni, Secretary General of the Region of Central Macedonia. The event concluded with a Round Table discussion – held in the new auditorium of the Institute - on the most important issues facing the transport sector in Greece.



5th INTERNATIONAL CONFERENCE ON TRANSPORT RESEARCH

Ten years have passed from the 1st International Conference on Transport Research, which H.I.T. co-organizes every two years with the Hellenic Institute of Transportation Engineers. In September 2010, the 5th Conference was successfully held in the city of Volos, with its main theme being: "Energy, Environment & Transport". The event was attended by more than 200 participants representing Academic and Research

Institutions, and Public and Private sector organizations from Greece and abroad. The attendees had the opportunity to learn more and exchange ideas about recent developments and research activity on Transport Policy, Management & Operation of Transport Systems, Transport Safety, Exploitation, Monitoring and Control issues.



EUROPEAN BEST PRACTICES IN ROAD SAFETY CONFERENCE

HIT co-organized with FERSI (Federation of European Road Safety Research Institutes, www.fersi.org including 21 members from 21 countries and chaired during 2008-2011 by Dr. E. Bekiaris of HIT) a Conference – Exhibition on "European Best Practices in Road Safety" on 21 – 22 February 2011 in Zappeion, Athens. The Conference presented the most recent and advanced knowhow on road safety in Europe as

well as HIT relevant achievements in Greece and at European level. Relevant presentations took place, among others, by Dr. Sp. Vougias, Deputy Minister of Infrastructure Transport and Network of Greece, representatives of the main Transport Safety Research Organisations of Europe (FERSI, ECTRI, FEHRL, ERTICO, ETSC, etc.) as well as of the European Commission (Dr. S. Gouvras).

CONTRIBUTION TO IMPROVING ROAD SAFETY

The Hellenic Institute of Transport actively supports Road Safety efforts in Greece. In 2010 it was announced that HIT will participate in the newly formed National Road Safety Council of Greece. During the same year the Institute has co-organised a number of road safety awareness events in major Greek cities in cooperation with the National Traffic Police.

HIT also participated in the Conference on Improvement of Road Safety, which was organized by the Black Sea Economic Cooperation Organization (BSEC) and the United Nations Economic Commission for Europe, under the aegis of the Ministry of Infrastructure, Transport and Networks in the city of Ioannina. The Director of H.I.T.'s Department for Transport Safety, Prof. N. Iliou, gave a speech regarding the contribution of research in the improvement of road safety. Mr. Chrysanthopoulos, the Ambassador and Secretary General of BSEC was a volunteer driver of HIT's simulator.



Legal Status

The Hellenic Institute of Transport (H.I.T.) was established with Presidential Decree 77/2000. It is one of the six institutes within the Centre for Research and Technology Hellas (CE.R.T.H.).

CE.R.T.H. incorporates the following Institutes: the Chemical Process Engineering Research Institute (CPERI), the Informatics and Telematics Institute (I.T.I.), the Hellenic Institute of Transport (H.I.T.), the

Institute of Agrobiotechnology (I.N.A.), the Institute for Solid Fuels Technology and Applications (I.S.F.T.A.), and the Institute of Biomedicine and Biomolecular Research (I.B.B.R.) into a single not-for-profit private-status legal entity. CE.R.T.H. (and consequently H.I.T.) is under the supervision of the General Secretariat for Research and Technology (G.S.R.T.), of the Ministry of Education, Lifelong Learning and Religious Affairs.

Mission

The mission of HIT is to provide state of the art research and create innovation in the field of Transport in Greece and in Europe. Also to provide services that produce scientific results, implementable outcomes and specialized knowledge, to support policy and decision making in the field of Transport in Greece.

H.I.T. is a highly recognized research body in the field of Transport. Since its establishment in 2000 it has been a leading research institution in Greece offering specialized basic and applied research and highly technical services in all fields of transport.

H.I.T. has been recognized as a center of excellence in several fields and is a well recognized source of innovation and entrepreneurship in the field of transport in Europe, thus achieving one of the key objectives of the Center for Research and Technology Hellas (CE.R.T.H.).

The Institute cooperates with local, private and public bodies and other institutions in Europe and internationally, and represents Greece in various International trade and scientific fora.



Premises

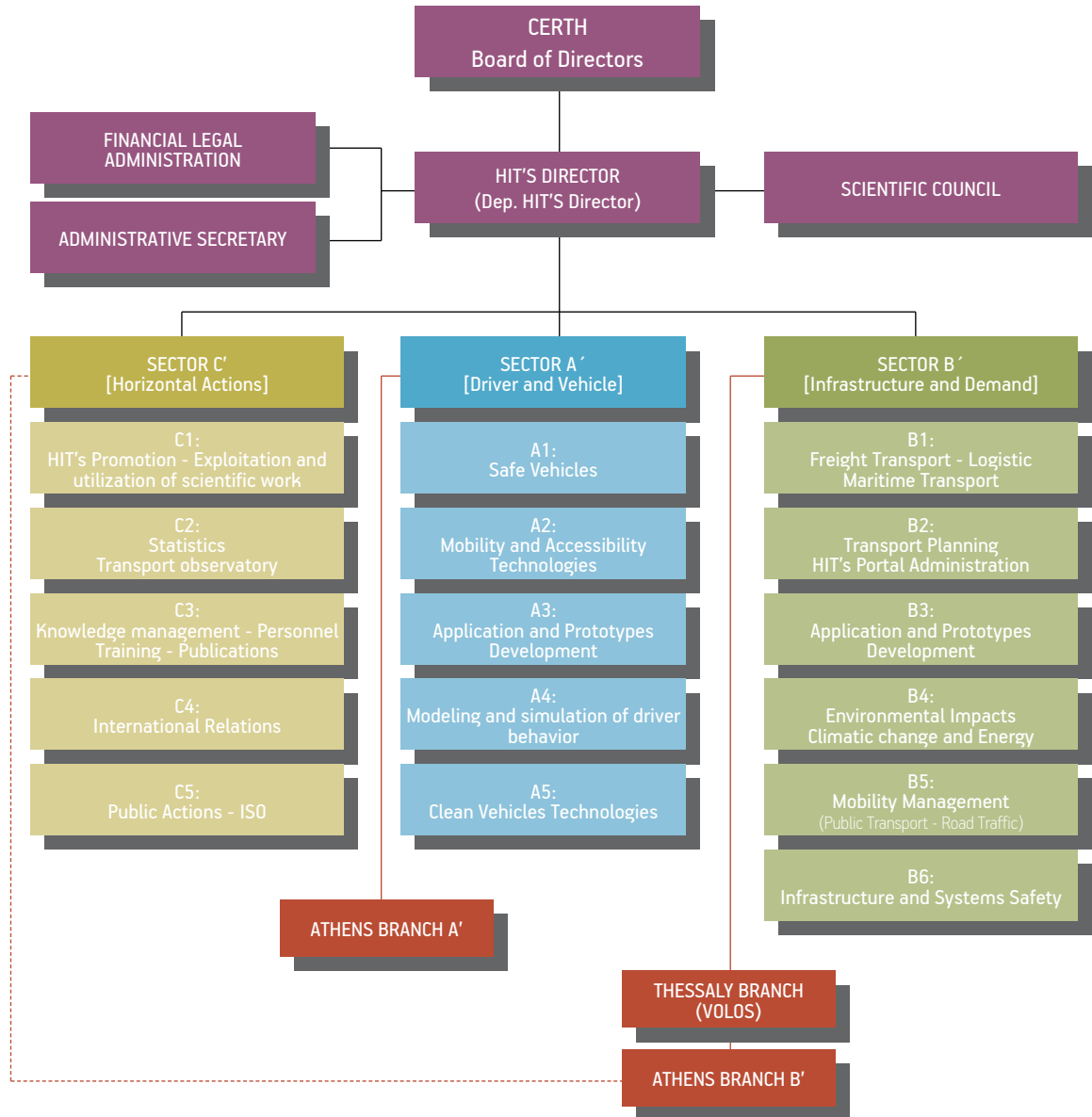
H.I.T.'s headquarters are located in the Thessaloniki Technology Park, within the premises of the Center for Research and Technology Hellas – CE.R.T.H. The Institute's building comprises two floors and two levels of underground laboratories and parking, fully equipped to cater to its current and future requirements for staff and infrastructure.

H.I.T. also has an Athens branch.



The Institute's Structure

[Organization Chart]



The organizational structure of HIT consists of three Sectors (a unit equivalent to a General Directorate) which carry out all research project work. These are:

- **Sector A: Driver and Vehicle**, Director: *Dr. E. Bekiaris*
- **Sector B: Infrastructure and Demand**, Director: *Dr. G. Aifandopoulou*
- **Sector C: Horizontal Activities**, Director: *Dr. M. Boile*

SECTOR A' specializes on driver behavior, design and development of systems enhancing the vehicle's performance, and the study of driver – vehicle system issues.

Indicative subjects of Sector A:

- ICT – Information Communication Technologies applications on “smart” vehicles.
- Advanced vehicle and fuel technologies (“clean” vehicles).
- Advanced Driver Assistance Systems (ADAS).
- Drivers', instructors' and users' training.
- Advanced driving and vehicle simulation systems.
- Road Safety (on a driver – vehicle system improvement level).
- Mobility issues in the aspects of vehicle – driver technology.

SECTOR B' specializes on issues concerning the planning, design, management and operation of the transportation system.

Indicative subjects of Sector B:

- Transportation planning at national and regional level.
- Transportation Systems.
- Transport infrastructure.
- Data collection, maintenance and analysis.
- ICT – Information Communication Technologies in transport and in developing the “smart” infrastructure (“smart ways”).
- Transport Policy.
- Transport Economics.

SECTOR C' responsible for the execution of “horizontal” research and various other supporting activities for the promotion of H.I.T.'s work.

Indicative subjects of Sector C:

- Promote the scientific collaboration between the Institute and the academic community in Greece and abroad.
- Make funding recommendations for basic research activities and exploitation of innovative ideas.
- Develop H.I.T.'s promotion strategy to public and private sector organizations in Greece and abroad.
- Develop H.I.T.'s knowledge management policy.

SUB - SECTORS:

1. Vehicle Safety
2. Technologies of Mobility and Accessibility
3. Development of Applications and Prototypes
4. Modeling and Simulating the Driver's Behavior
5. “Clean Vehicles” Technology.

- Transport Safety.
- Environmental and Energy impacts of the transportation systems.

Sub - sectors:

1. Freight Transport, Logistics, Maritime Transport
2. Transportation Systems, Design, Management of the Internet Based Information Platform of HIT (www.imet.gr/KOMVOS)
3. Development of Applications and Prototypes
4. Environmental Impacts, Climate Change and Transport Energy
5. Mobility Planning – Control and Management of the Public Transport System and the Road Traffic
6. Transport System and Infrastructure Safety

- Manage H.I.T.'s publication services.
- Handle media, community, industry and governmental relations.

Sub - sectors:

1. H.I.T.'s Publicity – Scientific Utilization of the research results and Dissemination of Knowledge
2. Statistical Data and Transport Observatory
3. Knowledge Management - Education & Training - Publications
4. International Relations
5. Public Affairs & ISO

Management

The Institute is managed by its Director (or, when required, the Deputy Director). The Director's responsibilities are defined in the internal Regulation of CERTH and the Presidential Decree that created HIT. The Director is also responsible for the overall quality of the work, the evaluation of the productivity of personnel, the development and allocation of responsibilities for the staff, upon the Scientific Council's recommendation. Since the creation of the Institute (in 2000) its Director is Prof. G. A. Giannopoulos.

The Deputy Director, is appointed by the CE.R.T.H.'s Board of Directors and is a qualified and well recognized Researcher. It is traditional that the deputy director of HIT is a professor from one of the Greek Universities as a representative of the academic research community of Greece. For the two year period 2010-2011 the deputy director of HIT is Prof. A. Stathopoulos of the National Technical University of Athens.

The Institute's Scientific Council comprises of at least five high-ranking researchers and is responsible for recommending to the Director and the CERTH Board of Directors the Institute's budget, its annual plan of activities and balance statement, advising on the scientific policy and the Institute's objectives, and debating the Institute's research and development programme.

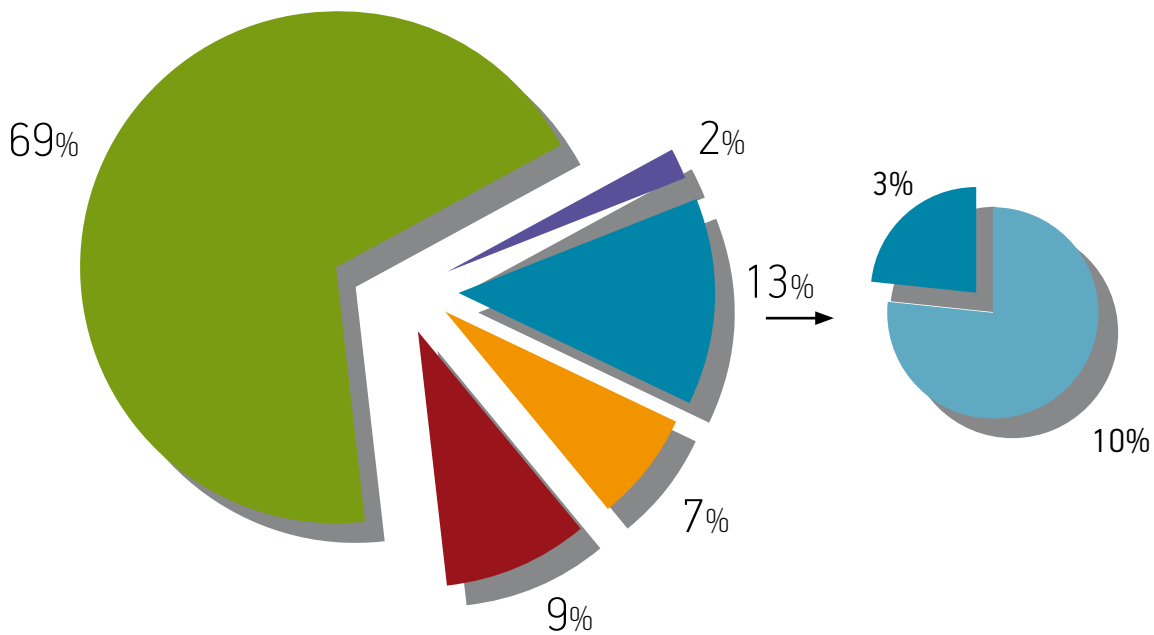
The members of the Scientific Council of HIT for the year 2010, were:

- **Prof. G. Giannopoulos**, chairman
- **Prof. A. Stathopoulos**, Deputy Director (since 01/06/2010)
- **Dr. E. Bekiaris**, Researcher A'
- **Dr. M. Boile**, Researcher A'
- **Dr. G. Aifandopoulou**, Researcher B'
- **Dr. I. Tyrinopoulos**, Researcher B' (until 31/10/2010)
- **Dr. M. Panou**, Researcher C'
- **Dr. M. Morfoulaki**, Special Operational Scientist B'

Human Resources

In 2010, H.I.T. employed:

- Elected Research Staff (Researchers at Grades A, B and C).
- Management and Technical Scientists on fixed – term contracts.
- External Scientists or Experts on a project contract basis.
- In total, H.I.T.'s scientific staff for 2010 numbered 75 persons.



69% RESEARCH (TECHNICAL) PERSONNEL

2% SUPPORTING

13% SCIENTIFIC [RESEARCHERS 10% | FACULTY MEMBERS 3%]

7% FELLOWSHIPS

9% ADMINISTRATIVE

Principal management and Researcher staff in 2010 [alphabetically]

1. **Dr. G. Aifandopoulou**, Civil & Transport Engineer, Researcher B'
2. **Dr. E. Bekiaris**, Mechanical Engineer, Researcher A'
3. **Dr. M. Boile**, Civil, Environmental & Transport Engineer, Researcher A'
4. **Prof. G. Giannopoulos**, Director
5. **Dr. M. Morfoulaki**, Civil & Transport Engineer, Special Operational Scientist B'
6. **Dr. M. Panou**, Computer & Electronics Engineer, Researcher C'
7. **Prof. A. Stathopoulos**, Deputy Director
8. **Dr. I. Tyrinopoulos**, Transport Engineer, Researcher B'

Research Technical Personnel (including management) [in alphabetical order]

1. **Agnadis Konstantinos**, Computer Programming
2. **Chalkia Eleni**, Civil Engineer, MSc in Transport Engineering
3. **Charalampous Giorgos**, Civil Engineer, MSc in Transport Engineering
4. **Chatziathanasiou Maria**, Civil Engineer, MSc in Transport Engineering
5. **Chrysohoou Evaggelia**, Mathematician, MSc in Statistics & Operational Research
6. **Dimopoulou Stayroula**, Lawyer
7. **Gagatsi Elisavet**, Civil Engineer, MSc in Transport Engineering
8. **Gaitanidou Evaggelia**, Civil Engineer, MSc in Transport Engineering
9. **Gkaitatzi Olga**, Electrical & Computer Engineer
10. **Gemou Maria**, Mechanical & Aeronautics Engineer, PhD candidate in Aristotle University of Thessaloniki
11. **Kalogirou Konstantinos**, BSc in Software Engineering, MSc in Digital Signal Processing and Communication Systems
12. **Kesidou Eleni**, Electrical & Computer Engineer
13. **Kortsari Anna**, Civil Engineer, MBA
14. **Loukea Stamatina**, Psychologist
15. **Mantadis Ioannis**, BA in Economics
16. **Margaritis Dimitrios**, Automotive Engineer
17. **Mitsakis Evaggelos**, Civil Engineer
18. **Myrovali Glykeria**, Civil Engineer, MSc in Transport Engineering
19. **Nikolaou Styliani**, Software Developer
20. **Papadimitropoulou Vasiliki**, Business Management
21. **Papanikolaou Anestis**, Civil Engineer, MSc in Transport Engineering
22. **Pahatouridis Konstantinos**
23. **Salanova Grau Jose**, Civil Engineer, MSc in Transport Engineering
24. **Sdoukopoulos Eleftherios**, Rural & Surveying Engineer - MSc Transport Engineer
25. **Spanidis Pavlos**, BSc in Software Engineering, MSc in IT and Data Communications
26. **Tzenos Panagiotis**, Software Engineer
27. **Touliou Aikaterini**, BA in Psychology
28. **Tsaprounis Taxiarchis**, Mathematician – MSc in Information Technology
29. **Tsioutras Athanasios**, Civil Engineer, MSc in Environmental Studies & Transport Engineering
30. **Vayou Maria**, Chemical Engineer, MSc Operations Management
31. **Vasilantonakis Mihalīs**, BEng in Control and Computer Systems Engineering, Msc in Computer Systems & Networking

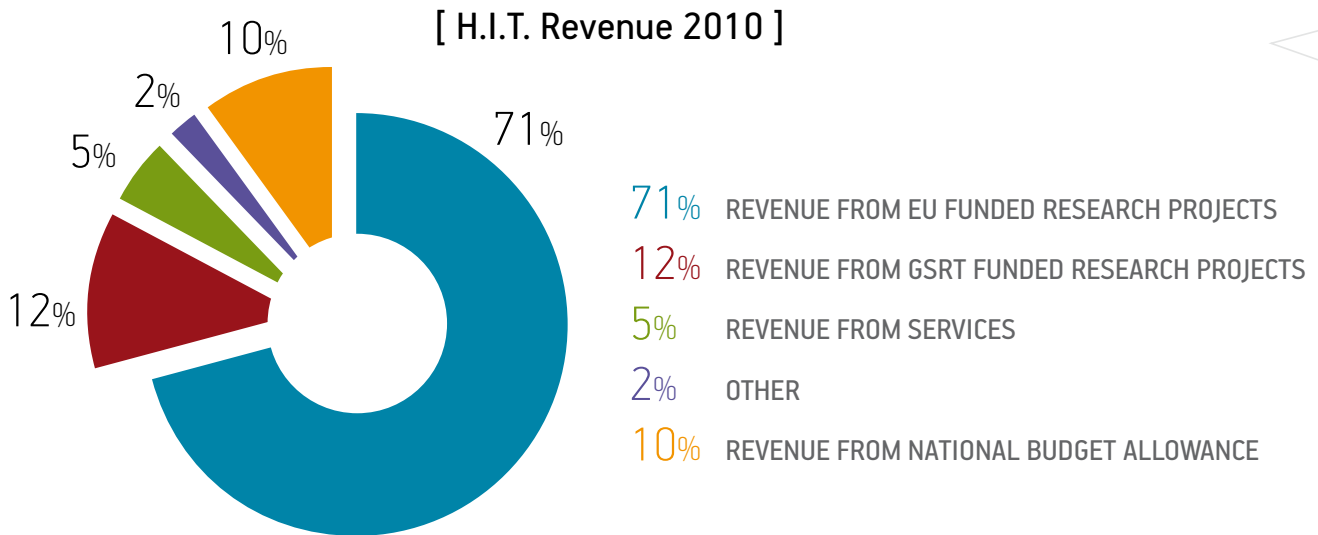
Secretarial Staff [in alphabetical order]

- **Christodoulou Anastasia**, Management Secretary / Secretary, Sector B
- **Karatza Maria**, Branch Secretary, Sector A
- **Kostouli Anastasia**, Secretary, Sector A
- **Sigala Georgia**, Branch Secretary, Sector B (from 01/01/2010 until 31/05/2010)
- **Spyridaki Argyro**, Administrative Secretary Sector C, (since 01/06/2010)

Financial Report 2010

In 2010, the Hellenic Institute of Transport continued its activities in terms of European and National Research Programs and services provision to private and public Institutions.

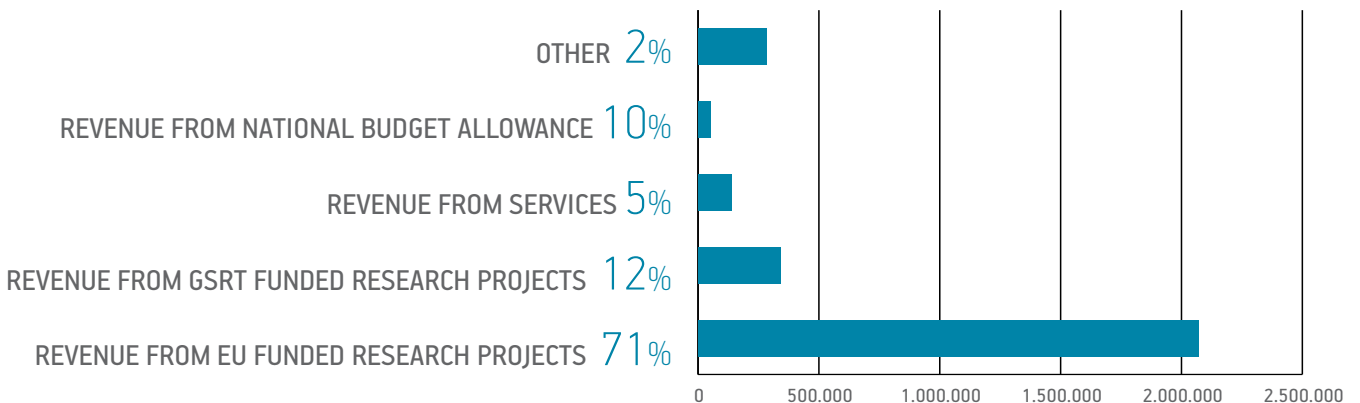
The main financial indicators for H.I.T.'s activity in 2010 are presented graphically in the following figure:



H.I.T.'s largest source of revenue for 2010 are the European Union funded research projects (71%), with an additional 12% of total revenue from General Secretariat for Research and Technology research projects. Revenue from Services and the National Budget represents a small share of 5% and 10% respectively.

Most of the Institute's significant inflows come from successful proposals undergoing competitive procedures and thorough technical evaluations, indicating H.I.T.'s highly competitive position at a European level.

[Financial Report 2010]



| REVENUE FROM EU FUNDED RESEARCH PROJECTS 71% | REVENUE FROM GSRT FUNDED RESEARCH PROJECTS 12% | REVENUE FROM SERVICES 5% | REVENUE FROM NATIONAL BUDGET ALLOWANCE 10% | OTHER 2% |
|--|--|--------------------------|--|----------|
| 2.070.061 | 340.468 | 140.744 | 284.015 | 53.175 |

■ €

Research Infrastructure

The **MOBILE LAB FOR ENVIRONMENTAL AND TRAFFIC MEASUREMENT** has been developed by H.I.T to provide the mobile resources for collecting and analyzing data, which will promote transportation / environmental research in Greece and will assist actions for the reduction of environmental pollution and traffic related problems.



The **DATA MANAGEMENT PORTAL** is a web based portal which provides Transport Data Management and Process services, supporting the Transport Research Community in Greece. The H.I.T. portal - www.imet.gr/komvos - manages raw and ICT processed data to offer the users the following services: Observatory, Routing, Transport planning and simulation tools, Infomobility Center, Innovation Incubation, Test Platform.



The **RESEARCH VEHICLE FOR DRIVER BEHAVIOUR** can record and analyze on-line driving behavioral parameters as well as simulate and evaluate advanced driving assistance systems.

ulated and ergonomic and user acceptance studies may be performed. Furthermore, the driving behavior can be analyzed in detail and safety studies regarding vehicle and road interventions can be conducted.

Using this research vehicle, the functionalities of several advanced driving assistance systems can be sim-

- ΚΕΝΤΡΙΚΟΣ Η/Υ
- GPS
- ΣΥΣΤΗΜΑ ΑΝΑΓΝΩΡΙΣΗΣ ΛΟΡΙΔΩΝ
- ΣΥΣΤΗΜΑ ΕΝΤΟΠΙΣΜΟΥ ΕΜΠΟΔΙΩΝ



- ΑΙΣΘΗΤΗΡΑΣ ΠΑΡΑΚΟΛΟΥΘΗΣΗΣ ΟΦΘΑΛΜΩΝ
- ΑΙΣΘΗΤΗΡΑΣ ΠΑΡΑΚΟΛΟΥΘΗΣΗΣ ΒΛΕΜΜΑΤΟΣ
- ΘΡΟΝΗ ΕΠΑΦΗΣ
- ΣΥΣΤΗΜΑ ΔΟΝΗΣΗΣ ΖΩΝΗΣ

In the context of the European project «MobiNET - Mobility Center Network», H.I.T. designed and developed and is now hosting the on-line services of the first **MOBILITY CENTER NETWORK** in Greece, which operates in the Municipality of Kalamaria. The services devel-

oped include information on stops, time – schedules, itineraries of the municipal and the suburban public transport, on points of interest via web GIS, and information for mobility impaired persons.

The **VIRTUAL REALITY SYSTEM** that H.I.T possesses is a single wall cave system and is intended for designing and performing structural studies and ergonomic or other safety assessment analyses that require the simulation of a series of various procedures. For the implementation of the above research scopes, the Virtual Anthropos software package give the potential

for the visualization and manipulation of 2D and 3D CAD files in immersive environment in real time. Additionally, by means of the use of human models, there is the potential for Human Factor and Risk Analyses, before the final physical product is to be produced and commercially exploited.

The **DRIVING SIMULATOR** based upon a Smart vehicle, is used to study dangerous driving situations, which would not be safe to test in real traffic conditions like, for example, overtaking, driving under the influence of alcohol, or drugs, etc. The specialized software allows the development of special driving scenarios, according to the purposes of each study. The direction and the speed of the vehicle can be freely chosen by the driver and the surrounding traffic includes up to 30 different types of vehicles – passenger cars, trucks and bicycles – which are always observing the traffic rules. The behavior patterns may be modified, from very aggressive to extremely slow, the driver may choose from a variety of different sight and road conditions such as nice weather, fog, rain, snow, night etc. Additionally, there are specific software modules related to elderly, unskilled or drunk drivers' behavior assessment. All operational elements – steering wheel, accelerator pedal, brake pedal, gearshift lever and handbrake lever – provide nature-true force reactions so that the driver has the sense of real time driving. The vibration device creates nature-true vibrations of the car according to the operation of the simulated engine, the sound system



generates original sounds according to the situation (starter, engine noise, horn, screeching of tires, drive wind, rain, etc.) and the driver's sight system includes five large screens surrounding the Smart cabin driving simulator.

The **MOTORBIKE SIMULATOR** supports the development of new algorithms and "smart" software aiming to improve the safety of the rider, and to test newly designed rider assistance systems before they are implemented in practice. An additional research subject of this dynamic simulator is the measurement of the reaction of the rider during an incident and/or during control of a number of different events.



H.I.T.'s equipment also includes a fleet of **CLEAN VEHICLES** that are used to survey the impacts from the introduction of Clean Vehicles in the urban traffic. These vehicles are described below:

- The **ELECTRICAL ASSISTED BICYCLES** are used to assist the rider in propulsion. Each bicycle weights approximately 38 kg and can carry double its weight, up to 80 kg. The maximum speed for these bicycles is 20 km/h and the maximum electrically driven range is 35-50 km.



- The **HYBRID VEHICLE TOYOTA PRIUS** is being used in research projects which survey the technologies of clean vehicles. A special recording device has been installed on the vehicle, which stores data regarding fuel consumption and driving behavior. This data can be sent via GPS to a data center for monitoring and consulting purposes.



- The **ELECTRICAL MOPED EVT** is a test vehicle with low noise level and smooth acceleration. It is easy to use and has two different modes of operation (economy and reinforced) and a portable charger.



- The **PIAGGIO MP3 HYBRID** is the first hybrid motorcycle model ever produced. It contributes to the research on the reaction of the rider during an incident or during multitasking situations. Additionally, Piaggio MP3 Hybrid aims at the experimental measurement of the acceptance of newly produced systems before their introduction to the market models. It is used in surveys of drivers' behavior.

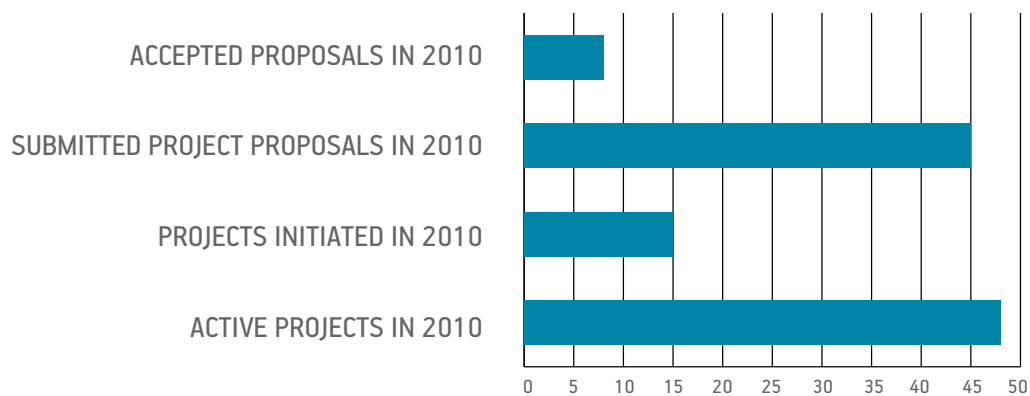


Scientific Work

A. Research Projects

During 2010 H.I.T had 48 active projects. Fifteen of them were initiated in 2010. Forty - five new proposals were submitted in 2010, 8 of which have been accepted to date.

[OVERVIEW OF HIT's 2010 PROJECTS]



| ACTIVE PROJECTS IN 2010 | PROJECTS INITIATED IN 2010 | SUBMITTED PROJECT PROPOSALS IN 2010 | ACCEPTED PROPOSALS IN 2010 |
|-------------------------|----------------------------|-------------------------------------|----------------------------|
| 48 | 15 | 45 | 8 |

■ NUMBER

An indicative presentation of the projects of HIT that were initiated in 2010 are highlighted in the following table:

■ CLOSER

SECTOR B'

Full title: **Connecting Long and Short- distance networks for Efficient tRansport**

Project Manager: **Y. Tyrinopoulos**

Project Coordinator: **FhG IVI**

CLOSER aims to build upon existing research, develop innovative tools for the analysis of interfaces, check them in case studies and make specific recommendations in order to get:

- A more systematic approach to the whole project cycle of interfaces.
- Specific guidelines for decision makers in order to cope with the challenges and to get the most out of the opportunities in the areas of transport, spatial, and economic development.
- Friendlier regulatory environment; cooperation and supporting better integrated interfaces.
- Improved mechanisms for funding those concepts with a higher degree of integration.
- Involvement of stakeholders, particularly transport operators.

■ HERMES

SECTOR B'

Full title: **High Efficient and Reliable arrangeMEnts for CroSsmodal Transport**

Project Manager: **G. Ayfantopoulou**

Project Coordinator: **IST**

HERMES provide development and analysis of new mobility schemes and associated organisational patterns at the interface and interconnection between long distance transport networks and local/regional transport networks. The project deals with:

- The identification of the key requirements of the travellers, the corresponding services and necessary underlying company agreements to provide them, followed by a business plan for the operation.
- The demonstrations in the selected corridors
- The production of a handbook of recommendations
- The development and testing of prototypes for the business model of the innovative services
- The development of recommendations regarding enhanced co-ordination between decision-making levels

■ VERITAS

SECTOR A'

Full title: **Virtual and Augmented Environments and Realistic User Interactions To achieve Embedded Accessibility DesignS**

Project Manager: **E. Bekiaris**

Project Coordinator: **FhG/ IAO**

Purpose of **VERITAS** project is to develop, validate and assess tools for built-in accessibility support at all stages of ICT and non-ICT product development, including specification, design, and development and testing; so that they are fully accessible by all types of users; including the elderly and disabled. Thus, the industrial models of a typical "Greek driver" or "German driver" are extended and detailed to include different drivers age groups and physical or mental residual abilities.

■ BESTPOINT

SECTOR A' Full title: Criteria for BEST Practice Demerit POINT Systems
Project Manager: E. Bekiaris
Project Coordinator: KfV

The objective of **BESTPOINT** is to collect, analyze, summarize and disseminate best practice criteria for DPS as well as to develop a tool towards harmonization on European level. To achieve this goal a comprehensive literature analysis will be carried out which will besides expertise be the foundation for evaluation tools. With the help of those tools and an EU-wide data collection regarding DPS a best practice criteria list will be derived which will be further discussed on the national and the European level. Final outcome will be best practice guidelines (handbook) for the implementation of an effective demerit point system.

■ DaCoTA

SECTOR A' Full title: Road safety Data Collection, Transfer and Analysis
Project Manager: E. Bekiaris
Project Coordinator: VSRC

The **DaCoTA** project will add to the strength and wealth of information in the Observatory by enhancing the existing data and adding new road safety information. The main areas of work include:

- Developing the link between the evidence base and new road safety policies
- Establishing a Pan-European Accident Investigation Network
- Bringing a wide variety of data together for users to manipulate
- Predicting accident trends, presenting data to policy makers
- Intelligent safety system evaluation
- Naturalistic driving observations.

■ DETRA

SECTOR A' Full title: Developing the European Transport Research Alliance
Project Manager: E. Bekiaris
Project Coordinator: FERHL

The concept of **DETRA** derives from the Lyon Declaration. In 2008, the Lyon Declaration signatories, ECTRI, FERSI, FEHRL, EURNEX, HUMANIST, ISN and NEARCTIS committed themselves to working together on the deepening of the European Research Area objectives in transport in order to address the Grand Challenges. From this commitment grew the objective to create a European Transport Research Alliance (ETRA) that would strengthen the transport domain. The project will result in Transport Research Priorities and a Roadmap to govern the European Transport Research of the future.

■ INTERSTRESS

SECTORA'

Full title: **Inter-reality in the Management and Treatment of Stress-Related**

Project Manager: **E. Bekiaris**

Project Coordinator: **ISTITUTO AUXOLOGICO ITALIANO**

INTERSTRESS aims to design, develop and test an advanced ICT based solution for the assessment and treatment of psychological stress. The system aims at

- objective and quantitative assessment of symptoms using biosensors and behavioral analysis;
- decision support for treatment planning through data fusion and detection algorithms; and
- provision of warnings and motivating feedback to improve compliance and long-term outcome. HIT work focuses on drivers stress.

■ NOBEL

SECTORA'

Full title: **Neighbourhood Oriented Brokerage ELelectricity and monitoring system**

Project Manager: **E. Bekiaris**

Project Coordinator: **ETRA**

The **NOBEL** project builds an energy brokerage system with which individual energy consumers can communicate their energy needs directly with both large-scale and small-scale energy producers, thereby making energy use more efficient. Within it HIT develops the intelligent agents to perform the brokerage and connects electric vehicles to the network, both as consumers and small energy producers (called "prosumers").

■ UNIVERSAAL

SECTORA'

Full title: **UNIVERsal open platform and reference Specification for Ambient Assisted Living**

Project Manager: **E. Bekiaris**

Project Coordinator: **SINTEF**

UNIVERSAAL standardizes and integrates different architectures of Ambient Assisted Living (AAL) applications, thus supporting independent living and mobility of the elderly. HIT focuses upon transport and tourism applications integration.

■ e-FREIGHT

SECTOR B' Full title: European e- Freight capabilities for co – modal transport
Project Manager: M. Boile
Project Coordinator: BMT Group

Facilitate the use of different transport modes on their own or in combination to obtain an optimal and sustainable utilization of EU freight transport resources by providing an e-Freight platform, supporting the design, development, deployment and maintenance of e-Freight solutions, validated in business cases and pilots.

■ SMART - WAY

SECTOR B' Full title: Galileo based navigation in public transport systems with passenger interaction
Project Manager: Y. Tyrinopoulos
Project Coordinator: IVI, ITWM

The idea of **SMART-WAY** is to develop a real public transport navigation system based on mobile devices that gives passengers the possibility to act as they are used to do with common navigation systems in their cars. Once entered the destination of their trip they will be able to get into a vehicle and to jump off/on as often as they like to. The system will always guide them to the destination. Passengers are not longer bound to a printout of the route. They may change and interrupt their trips as often as they want to.

■ KEM

SECTOR B' Full title: Λειτουργία κέντρου εξυπηρέτησης μετακινουμένων Δήμου Καλαμαριάς
Project Manager: G. Ayfantopoulou
Project Coordinator: Municipality of Kalamaria

This project deals with the first Mobility Center in Greece, in the Municipality of Kalamaria. The services include:

- the daily operation of the center
- the selling of PT tickets and the investigation of adding services
- the technical and scientific support of the Municipality on transport issues, supervision of transport study, local transport regulations implementation study as well as with projects dossiers for studies assignment
- an event organization in the context of the mobility management week
- implementation of educational seminars for students
- Center's cooperation with municipal kindergartens of Kalamaria
- Center's webpage hosting, operation, update

SECTOR B'

■
Full title: **Study for the optimization of the pupils transport system, towards the effective implementation of the envisaged School of the 21st century**

Project Manager: **G. Giannopoulos**

Project Coordinator: **Ministry of Education and Lifelong Learning**

The main purpose of this study is to formulate a workable, flexible, effective and economically efficient (cost/benefit) system for the management and implementation of students' transportation system, which could have direct application and improve the existing situation. The study was assigned by the Ministry of Education and Lifelong Learning.

The study aims to optimize the execution of students' trips analyzing the ambiguities and gaps of the existing legal framework, organizing with methodical and modern way the necessary data and suggesting new organizational arrangements for their implementation.

SECTOR B'

■
Full title: **Provision of Services for the Planning of Inter - Urban Public Transport in the TransEuropean Network (TEN-T) of Cyprus**

Project Manager:

Project Coordinator: **Ministry of Communications and Works of Cyprus**

This specific project includes the design of an efficient and effective inter-urban public transport system, using buses, and related infrastructure on the motorway network (intermodal stops and passenger information systems). The public transport services shall be connecting the major cities of Cyprus (Lefkosia, Lemessos, Larnaka, Ammohostos and Pafos), special land uses (airports, ports, universities) and major tourist destinations in the Island.

SECTOR B'

■
Full title: **Specialized study for the implementation of dedicated bicycle lanes along main streets in the Central Area of Nicosia**

Project Manager: **G. Ayfantopoulou**

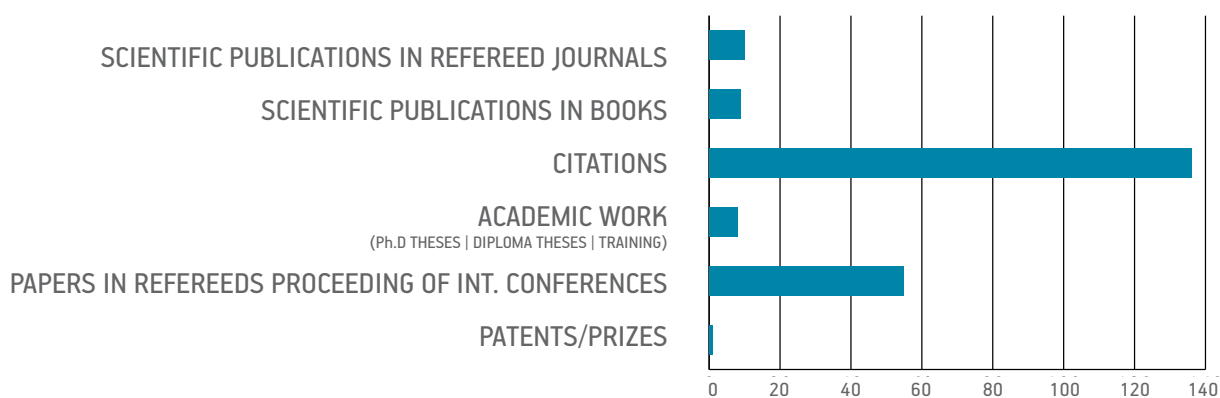
Project Coordinator: **Ministry of Communications and Works of Cyprus**

In collaboration with the Ministry of Communications and Works – Public Works Department, a traffic simulation model has been developed for the evaluation of the impacts from the implementation of dedicated bicycle lanes along Makariou and Stasinou streets, in Nicosia's Central Area. The model has been used for testing various scenarios, providing key performance indicators for evaluating the consequences of the dedicated lanes on road traffic and for proposing different traffic adjustments for reducing or eliminating these consequences. The final selected scenario has been modeled in detail for proposing accurate traffic adjustments for the roads of the central area of Nicosia.

B. Publications

A summary of publications and other scientific outcomes of H.I.T.'s research work is presented in the figure below.

[PUBLICATIONS / SCIENTIFIC OUTCOME]



| PATENTS/PRIZES | PAPERS IN REFEREEDS PROCEEDING OF INT. CONFERENCES | ACADEMIC WORK (Ph.D THESES - DIPLOMA THESES - TRAINING) | CITATIONS | SCIENTIFIC PUBLICATIONS IN BOOKS | SCIENTIFIC PUBLICATIONS IN REFEREED JOURNALS |
|----------------|--|--|-----------|----------------------------------|--|
| 1 | 55 | 8 | 136 | 9 | 10 |

■ NUMBER

C. New Research Directions

During its ten years of operation, the Hellenic Institute of Transport has been active in many different research sectors. The latest goals of H.I.T. include the following:

1. Improvement of ICT – Information Communication Technologies in Transport.
2. Creation of databases to support staff training and research activities.
3. Road Safety and mobility issues, especially for vulnerable road users, such as PTW riders, elderly drivers and travelers with disabilities.
4. Development of applications and prototypes for the improvement of freight transport and logistics.
5. Production of scientific results to support the national transport policy and decision – making and the planning of European priorities on Transportation Policy.

Furthermore, the Hellenic Institute of Transport is planning to increase and further direct its research activities over new important sectors for the future of the transportation in Greece such as:

A. Renewable Energy for Mobility

An important initiative of the cooperation of three C.E.R.T.H. Institutes - Chemical Process Engineering Research Institute (C.P.E.R.I.), Hellenic Institute of Transport (H.I.T.) and Institute for Solid Fuels Technology and Applications (I.S.F.T.A.) – is already under materialization. This regards the creation of a new research area of great importance for the production and use of renewable energy in Transport, named “ENERGY CORRIDOR OF GREEN TECHNOLOGIES” – E.N.C.O.R.

E.N.C.O.R. is devoted to hosting current and new research infrastructure targeted to all Energy related activities where the participating Institutes already have a significant experience and expertise (such as

multifunctional reactor technology, thermo-chemical processes, solar hydrogen and related technologies, bio-fuel technologies, CO₂ capture and related technologies, clean and energy efficient engines and vehicles as well as green transport operations and management) and has already established a longterm cooperation with eminent research / industrial organizations in these fields.

B. Environmental Protection and the Climate Change Challenge

Taking into consideration the relevant current contribution of the transport sector to the increase of global warming, H.I.T. participates in the only project running in Greece regarding the environmental impact of the Greek transportation system and its effects on the climate change. The specific project was an answer to the call of the National Bank of Greece, the outcomes of which are going to be used in the development of this area of knowledge in order to prevent the most severe impacts of climate change effected by the Transportation Sector.

C. Sustainable Mobility

H.I.T. is the coordinator of a project that aims to apply a sustainable mobility system in the town of Thessaloniki. The project is funded by the European Economic Area (EEA) and the Greek Government with the amount of 4 million Euros. Once it has been completed, Thessaloniki will be the only city in Greece in which a real time sustainable mobility system will be operating.

The goal of H.I.T is to develop these new sectors and be the major resource for transport research in Greece.



Activities in Education and Training

MATLAB on-line Seminar

An internet based Seminar on MATLAB was held in October of 2010 at the headquarters of H.I.T. in Thessaloniki. The seminar was attended by 17 people who were trained on the algorithm development and in-

formation analysis using MATLAB and the automatic conversion of the algorithm from MATLAB code into embeddable C/C++ code.

Info Day: 7th Framework Program for Research and Technological Development. Third Call of Thematic Priority 7: Transport Aeronautics

An Info Day entitled “7th Framework Program for Research and Technological Development. Third Call of Thematic Priority 7: Transport Aeronautics” was held in October 2010 at the main amphitheater of the Conference Center of Thessaloniki Technology Park. During this info day, which was organised by H.I.T. in cooperation with the PRAXI/HELP – FORWARD Network

– the national contact point in Greece for transport and member of the Enterprise Europe Network–Hellas, the participants had the opportunity to present their ideas for research topics in the transport and aeronautics sectors and to find partners as well as to discuss further issues regarding research in these specific areas.

H.I.T.’s Involvement in the “Planning, Organising and Managing Transportation Systems” Postgraduate Studies Programme.

Recognizing the importance of planning, organizing and managing of the transportation system at a local, regional, national and supranational level, H.I.T. with the Aristotle University of Thessaloniki (AUTH) Schools of Civil Engineering and Rural & Survey Engineering jointly run the cross – disciplinary postgraduate programme of study titled: “Planning, Organising and Managing Transportation Systems”. The aim of

the programme is to provide high standard education, with an international and European orientation and with the involvement of renowned and acclaimed educational institutions -based in Greece and abroad.

For more information you can visit: <http://pgtransport.civil.auth.gr/>

National and International Partnerships and Promotional Activities

CE.R.T.H. among the best Research Organizations in Europe

CE.R.T.H. is among the top 20 Research Organizations in Europe, ranked based on the number of participations in FP7 signed grant agreements during the period 2007 – 2010 (FP7 monitoring report 2010, EC).

CE.R.T.H. also ranks 79th among the top 100 Research Institutions in the European continent. This rank is based on EC funding and project participation performance, networking activity and diversity of research areas (European Research Ranking).

Mediterranean Sustainable Energy Summit

The director of H.I.T actively participated in the Mediterranean Sustainable Energy Summit which was held last May in Athens. The Congress was organised under the auspices of the President of Greek Republic in cooperation with the Institute for Climate and Energy Security, CGC International and the Financial Times. More than 50 international renowned speakers attended the event; among them was the Greek Prime Minister A. Papandreou and Prince Albert of Monaco.

The conference's goal was to challenge the participants to enter in a positive discussion on the prob-

lems that are related with the climate change in the Mediterranean area. This was accomplished through a dynamic combination of speeches, round table discussions and case study presentations. The outcomes on the use of sustainable energy and the creation of new business opportunities in the areas of tourism, construction and shipping were very important. The participants also discussed the latest breakthrough in the sectors of the wind and solar energy as well as the biomass and the clean coal.

The Hellenic institute of Transport has a dynamic presence in the Greek Media

- 25 TV shows and news casts
- 14 articles in newspapers and magazines.
- 11 presentations in various webpages
- 6 Road Safety Events

Additionally, H.I.T. holds a permanent column in the Supply Chain & Logistics Greek scientific magazine targeted at a board audience in the freight transport and logistics market and industry. Through these articles, H.I.T. tries to not only disseminate the project research outcomes but also raise public awareness on important transport issues and reflect the Institute's position on them.

“Challenges of International Intermodal Transport Between Latin America and Europe: Combining EU Best Practice Experience with Latin America Perspectives”

The International Conference entitled: “Challenges of International Intermodal Transport Between Latin America and Europe: Combining EU Best Practice Experience with Latin America Perspectives” was successfully organised by the Hellenic Institute of Transport in cooperation with Ricardo Franco Foundation, last November in Rio de Janeiro, Brazil in the framework of the research project ENABLE.

The Conference aimed to present the project activities and provide communication paths between all parties

interested in the wider intermodal freight transport and logistics developments in Latin America.

All the presentations contributed in a valuable discussion between 80 participants, representing among others major public authorities, business companies, major industrial players and transport associations. The Conference’s outcome was the transfer of knowledge between the two regions of Europe and Latin America.

H.I.T. is an active member of the following transport related networks:

1. ECTRI – European Conference of Transport Research Institutes

H.I.T. is a founding member of ECTRI. In January 2003, H.I.T.’s Director Prof. G. Giannopoulos was elected as the first ECTRI Chairman for a two-year period 2003-

2005 and was then re-elected in March 2005 for the 2005-2007 period.

2. SETREF – South East European Transport Research Forum

SETREF, which was founded in Thessaloniki in April 1997, is an international non-governmental, not-for-profit association of South East Europe Transport re-

search organizations. Today, SETREF has 33 member Organisations and is hosted by HIT in Greece. H.I.T. is currently holding the Forum’s vice-presidency.

3. ERTICO – European Road Transport Telematics implementation Co-ordination Organization

ERTICO was founded in 1991 on a joint initiative by the European Union and Member State governments. Its mission is the advancement and application of Intelligent Transport Systems and Services (ITS), to ensure sustainable mobility and quality of transportation.

In 2003, CERTH became the first Greek ERTICO stakeholder with two of its Institutes, namely H.I.T. and the Informatics and Telematics Institute (I.T.I.)

4. FERSI – Forum of European Road Safety Research Institutes

FERSI was founded in 1991 as an association of the transport safety research institutions in most European countries. H.I.T. joined FERSI in 2004. Dr E. Be-

kiaris (HIT Researcher A) was elected FERSI chairman in 2008.

5. EUROPEAN ENVIRONMENTAL AGENCY

The Hellenic Institute of Transport has been European Environment Agency’s National Focal Point for Greece since 2001. Specifically, HIT contributes to the proc-

ess of commenting on data used to produce European environmental indicators evaluating the transport-environment interaction.

«Research Priorities for Sustainable Maritime Transport»

The main objective of the workshop on “Research Priorities for Sustainable Maritime Transport” that took place in Brussels on the 24/6/2010, was to report on the results of MARPOS survey of research project outcomes and implementation, related to maritime transport activities funded under Framework Programmes 5, 6 and 7. The analysis, which was presented at the workshop, has identified useful research results that could be implemented within the maritime transport sector, and tasks that require further research and development.

Additional target of the event was to launch a fruitful discussion among experts in the European maritime transport aiming to identify the future priorities of maritime transport research, building on the results of the above analysis and also taking into account the WATERBORNE TP Strategic Research Agenda, and the changes that have taken place in recent years, including the global economic crisis.

Cooperations in Greece

In Greece, H.I.T. has a long-term stable cooperation with AUTH, and in particular with the Laboratories of Highway Engineering and Transport Engineering at the Department of Civil Engineering, as well as with the Transport Research Group of the Transport and Hydraulics Works Sector at the School of Rural & Survey Engineering. Also, HIT collaborates systematically with the Hellenic Institute of Transportation Engineers, jointly organizing the biennial Conference for Transport Research in Greece.

Finally, through the various studies and special research projects it undertakes, HIT has worked and is working with all the major Transport players in Greece. For instance: the Ministry of Infrastructure, Transport and Networks, the Ministry of Maritime Affairs, Islands and Fisheries, the Ministry of Environment, Energy & Climate Change, the Region of Central Macedonia, the Greek Railways, the Athens Urban Transit Organization, the Council for Thessaloniki’s Urban Transit (SASTh), and the Thessaloniki Port Authority (OLTh)

“Conference on Mobility Management and Seasonal Traffic Peaks”

The DELTA Final Dissemination Conference, entitled “Conference on Mobility Management and Seasonal Traffic Peaks” took place on the 4th and 5th of October, 2010 in Athens, Greece at the Hotel Titania in the city center. This two-day event was organized in cooperation with the European Platform on Mobility Management (E.P.O.M.M.), given the opportunity of the establishment of the Mobility Management Platform in Greece. The Conference was organized in a way to help the development of Mobility Management solutions, with a special focus on how to handle sea-

sonal traffic flows, as well as to assist the delegates to develop and expand their professional mobility network of experts.

The Conference was considered to be a great success, as numerous people attended it from both Greece and Europe representing well known Universities, Research Institutes as well as private companies dealing with the issue of Mobility Management in general and with the management of seasonal traffic peaks in particular.

International Recognition of HIT's Personnel



Prof. G. Giannopoulos, Director:

- Elected twice (in 2003 and 2005) as a Chairman of ECTRI (European Conference of Transport Research Institutes).
- Founding Member and Chairman for 7 years (1997 – 2004) of SETREF (South East European Transport Research Forum).
- Co-chairman of the working group on EU-US transport research cooperation (sponsored by the US/Transportation Research Board and ECTRI).
- Twice recipient of the "International Activities Award" of the USA Transportation Research Board.
- Chairman of the Transport Advisory Group of the European Commission's DG RTD and MOVE.



Dr. A. Bekiaris, Researcher A:

- Chairman of the EU Organization of Road Safety Institutes FERSI.
- Editor-in-Chief of the "European Transport Research Review" – ETRR.
- Member of the Administrative Committee of HUMANIST VCE.
- Member of the Board of HELIEV and AVERE (2010 -), Greek and European Association of clean vehicles respectively.
- Third prize of best ICT EU project in 2010 for SAFERIDER project, which he coordinated.



Dr. Boile, Researcher A:

- Founding Member of the ASCE Transportation and Development Institute (TGDI)
- Member of the Eno Transportation Foundation Board of Regents.
- Member of the Transportation Research Board (TRB) Marine Environmental Committee (AW030)

JOURNAL PUBLICATIONS

1. **Giannopoulos, G.A.**, Elrahman, O.A., (2010). Expanding international transport research collaboration working group presents findings. TR News, Issue 267, March 2010, Pages 43-45+48-49.
2. **Giannopoulos, G.A.**, Moschovou, T.P., (2010). Investigation of Inland Freight Transport Modal Choice in Greece. *Transportation Research Record: Journal of the Transportation Research Board*, No. 2168, pp. 43-52.
3. Goliias, M. M., **Boile, M.**, & Theofanis, S. (2010). Discrete Berth-Scheduling Problem: Toward a Unified Mathematical Formulation. *Transportation Research Record: Journal of the Transportation Research Board* (2168), 1-8.
4. Goliias, M. M., **Boilé, M.**, Theofanis, S., & Taboada, H. A. (2010). A Multi-Objective Decision and Analysis Approach for the Berth Scheduling Problem. *International Journal of Information Technology Project Management* , 1 (1), 54-73.
5. Goliias, M., **Boile, M.**, Theofanis, S., & Efstathiou, C. (2010). The Berth-Scheduling Problem: Maximizing Berth Productivity and Minimizing Fuel Consumption and Emissions Production. *Transportation Research Record: Journal of the Transportation Research Board* , 2166, 20-27.
6. Isacker, K. V., Goranova-Valkova, M., **Chalkia, E.**, **Bekiaris, E.**, Votis, K., Tzovaras, D. (2010). Accessible Web Design a Burden? - Lessons learned from the Accessible Project. *European Journal of ePractice*.
7. Laventhal, W., Theofanis, S., & **Boile, M.** (2010). Trends in Global Port Operations and Their Influence on Port Labor: Challenges and Implications for U.S. East Coast Longshoremen. *Transportation Research Record: Journal of the Transportation Research Board* (2166), 37-43.
8. Saharidis, G. K., **Boile, M.**, & Theofanis, S. (Available online 18 November 2010). Initialization of the Benders Master Problem Using Valid Inequalities Applied to Fixed-charge Network Problems. *Expert Systems with Applications*, 38 (6), 6627-6636.
9. Goliias M.M., **Boile M.**, Theofanis S. (2010) "A \bar{n} -opt based heuristic for the discrete berth scheduling problem". *Transportation Research Pt. C* 18(5), 794-806.
10. **Saharidis, G.**, Goliias, M., **Boile, M.**, Theofanis, S., & Ierapetritou, M. (2010). The Berth Scheduling Problem With Customer Differentiation: a New Methodological Approach Based on Hierarchical Optimization. *International Journal of Advanced Manufacturing Technology*, 46, 377-393.
11. Scholliers J., Joshi S., **Gemou M.**, Hendriks F., Aust M. L., Luoma J., Netto M., Engstrom J., Olsson S. L., Kutzner R., Tango F., Amditis A., Blosseville J. M., **Bekiaris E.** (2010). Development and Application of an Integrated Evaluation Framework for Preventive Safety Applications. *Transactions on Intelligent Transportation Systems, IEEE Journal, Manuscript: Special Issue on ITS and Road Safety*, T-ITS-09-12-0244.R1.
12. Zhang, T., **Saharidis, G. K.**, Theofanis, S., & **Boile, M.** (2010). Scheduling of Inbound and Outbound Trucks at Cross-Docks: Modeling and Analysis. *Transportation Research Record: Journal of the Transportation Research Board* (2162), 9-16.
13. **Saharidis G.K.**, Goliias M.M., **Boile M.**, Theofanis S., Ierapetritou M. (2010). "The berth scheduling problem with customer differentiation: A new methodological approach based on hierarchical optimization". *International Journal of Advanced Manufacturing Technology*. Vol. 46, Numbers 1-4 pp. 377-393

Edited Volumes

1. **Bekiaris E.**, **Gemou, M.**, & **Kalogirou, K.** (2010). Embedded user interface for mobile applications to satisfy design for all principles. In M. Rita (Ed.), *User Interfaces* (pp. 165-190). INTECH.
2. **Bekiaris, E.**, Bateman J.A. (2009). Content Interoperability Standardization, The open Reference Architecture of the OASIS Preject with its open source Common Ontological Framework and related tools. (L. M., & C. Galinski, Eds.) *CAS Special Edition on Managing Product Data Globally*, Beijing: China Association for Standardization , 41-44.
3. Mavridou E., Tzovaras, D., **Bekiaris, E.**, **Spanidis, P.**, **Gemou, M.**, & Hassapis, G. (2010). Embedded User Interface for web, mobile and desktop applications to satisfy Design for All principles. In *Trends and developments in automotive engineering*. INTECH.

Conference Proceedings

1. **Aifadopoulou G.**, Hatzioannidou F., (September 27-28, 2010). Multimodal transport system simulation for containerized freight flows. *5th International Congress on Transportation Research in Greece, Volos.*
2. **Aifadopoulou G.**, Mouskos K., **Salanova Grau J.M.**, **Chrysohoou E.**, Mitsakis E., (5 - 7 May 2010). Combination of macro & micro transport simulation models for supporting integrated mobility planning. *Urban Transport 2010, 16th International Conference on Urban Transport & the Environment, Limassol.*
3. Annund, A., Renner, L., Dukic, T., **Nikolaou, S.**, **Chalkia, E.**, & **Bekiaris, E.** (2010). Integrated system for safe transportation of children to school - SAFEWAY2SCHOOL. 15th International Conference Road Safety on Four Continents, March 28-30, 2010. Abu Dhabi.
4. **Bekiaris E.** et al, (2010). SAFERIDER - Advanced telematics for enhancing the safety and comfort of motorcycles riders. 17th ITS World Congress 2010, October 25-29, 2010. Busan.
5. **Bekiaris, E.** & **Gemou, M.** (2010). Use cases towards all inclusive mainstream ICT. FOSS-AMA (Free and Open Source Software-for Accessible Mainstream Applications), ETAPS 2010 Satellite event, March 27-28, 2010. Paphos.
6. **Bekiaris, E.**, & **Gaitatzi, O.** (2010). Use cases and scenarios for remote support of the elderly to live autonomously alone. ITS-Africa 2010 Conference & Exhibition, May 19-21, 2010. Durban.
7. **Boile M.**, Golias M., Ivey S. (2010) "A Bayesian hierarchical network for truck demand modeling" Proceedings of the Innovations in freight demand modeling and data: A Transportation Research Board SHRP 2 symposium. Crowne Plaza Hotel – Dulles Airport, Washington D.C.
8. **Bekiaris, E.**, **Gaitanidou, E.**, & **Spanidis, P.** (2010). ACCESS2ALL Project: Best practices database for accessible transportation. 12th International Conference on Mobility and Transport for Elderly and Disabled Persons (TRANSED 2010), June 2-4, 2010. Hong Kong.
9. **Bekiaris, E.**, **Gemou, M.**, & Tzovaras, D. (2010). Evaluation and impact analysis of a holistic dangerous goods cooperative system. 13th International IEEE Annual Conference on Intelligent Transportation Systems Submission - ITSC 2010, September 19-22, 2010. Madeira.
10. **Bekiaris, E.**, **Kalogirou, K.**, **Gemou, M.** (2010). Java user interface libraries for developing mobile applications. FOSS-AMA (Free and Open Source Software - for Accessible Mainstream Applications), ETAPS 2010 Satellite event, March 27-29, 2010. Paphos.
11. **Bekiaris, E.**, **Panou, M.**, & **Kalogirou, K.** (2010). Ambient intelligence in driving simulation for training young drivers. 15th International Conference Road Safety on Four Continents, March 28-30, 2010. Abu-Dhabi.
12. **Bekiaris, E.**, **Spanidis, P.**, **Gemou, M.** (2010). Intelligent Agents for Personalised Vehicle Configuration. International Conference on Kansei Engineering and Emotion research 2010, KEER 2010, March 2-4, 2010. Paris.
13. **Chalkia, E.** & **Bekiaris, E.** (2010). ACCESSIBLE EU Project Use Cases. 1st AEGIS Project Conference, October 7-8, 2010, Seville. Seville.
14. **Chalkia, E.** & **Bekiaris, E.** (2010). The ACCESSIBLE Software Applications Accessibility Assessment Tools and Evaluation Framework. CONFIDENCE 2010 International Conference, December, 9-10, 2010 . Jyvaskyla.
15. **Chalkia, E.**, **Bekiaris, E.**, Lopes, R., Kastori, G.-E., & Carrico, L. (2010). Harmonisation of accessibility components in the context of ACCESSIBLE project. The satellite event FOSS-AMA (Free and Open Source Software for Accessible Mainstream Applications) at ETAPS 2010 (European Joint Conferences on Theory and Practice of Software), March 27-28, 2010. Paphos.
16. **Charalampous G.**, **Gagatsi E.** (September 27-28, 2010). Co-modality and Logistics. Can a European e-Logistics platform contribute to the European Policy towards co-modality. *5th International Congress on Transportation Research, Volos, Greece.*
17. Diederichs, J.P., Ganzhorn, M., Widlroither, H., **Bekiaris, E.**, **Nikolaou, S.**, Montanari, R., et al. (2010). SAFERIDER HMI strategies for for motorcycles' ARAS and OBIS. 17th ITS World Congress 2010, October 25-29, 2010. Busan.
18. Espie, S., **Bekiaris, E.**, & **Nikolaou, S.** (2010). Naturalistic rider studies for the analysis of riders' behavior and safety, 2BESAFE. 15th International Conference Road Safety on Four Continents, March 28-30, 2010. Abu Dhabi.
19. **Gaitanidou, E.**, & **Bekiaris, E.** (2010). Priority implementation scenarios for accessibility of public transport for mobility impaired users. 3rd International Conference on Applied Human Factors & Ergonomics, (AHFE International 2010), July 17-20, 2010. Miami.
20. Ganzhorn, M., Diederichs, F., Widlroither, H., **Bekiaris, E.**, **Nikolaou, S.**, Montanari, R., et al. (2010). 8 Internationale Motorradkonferenz 2010, October 4-5, 2010. Cologne.
21. **Gemou, M.**, & **Bekiaris, E.** (2010). From user modeling to iterative design and development: The AEGIS IP UCD Approach. Proceedings of CONFIDENCE 2010 International Conference, 9-10 December 2010. Jyvaskyla.

22. **Giannopoulos, G.**, Zacharaki, E., (July 15-18 2010). Analysis of the spatial and personal characteristics that influence commuting travel behaviour, 12th WCTR 2010, Lisbon.
23. **Giannopoulos, G.A.**, Moschovou, T.P. (January 10-14 2010). Investigating the Process of Inland Freight Transport Modal Choice in Greece, Part I: Parameters and attributes influencing freight mode choice, Transportation Research Board 89th Annual Meeting, Washington DC.
24. Goliias, G., **Boile, M.**, Theofanis, S., & **Saharidis, G. K.** (2010). The Yard to Berth Operations Resource Allocation Problem at Marine Container Terminals. 5th International Congress on Transportation Research. Volos, Greece.
25. Isacker, K.-V., Goranova-Valkova, M., Tsakou, G., **Chalkia, E.**, **Touliou, K.** (2010). Brain and skills training applications in a game based environment for older people. Interactive Technologies and Games: Education, Health and Disability Conference, October, 26-27, 2010, Nottingham Trent University. Nottingham.
26. J.P, D., Ganzhorn, M., Widloither, H., **Bekiaris, E.**, **Nikolaou, S.**, Montanari, R., et al. (2010). SAFERIDER HMI strategies for for motorcycles' ARAS and OBIS. 17th ITS World Congress 2010, October 25-29, 2010. Busan.
27. K., T., Portouli, E., **Margaritis, D.**, & **Bekiaris, E.** (2010). An examination of the effects of continuous positive airway pressure (CPAP) treatment on the driving performance of patients suffering from sleep apnoea. 15th International Conference Road Safety on Four Continents, March 28-30, 2010. Abu Dhabi.
28. **Kalogirou, K.**, & **Bekiaris, E.** (2010). Design of accessibility framework for mobile devices Built-in accessibility framework for mobile devices. 1st International AEGIS Conference, October 7-8, 2010. Seville.
29. **Kalogirou, K.**, & **Bekiaris, E.** (2010). Java Micro Edition Accessibility Framework. CONFIDENCE 2010 International Conference, December 9-10, 2010. Jyvaskyla.
30. **Kalogirou, K.**, & Telkamp, G. (2010). An ontological framework for the elderly to control their home environment. IST-Africa 2010 Conference & Exhibition, May 19-21, 2010. Durban.
31. **Kalogirou, K.**, & Telkamp, G. (2010). An ontological framework for the elderly to control their home environment. IST-Africa 2010 Conference & Exhibition, May 19-21, 2010. Durban.
32. Katsoulis G., **Mitsakis E.**, Politis I., Evangelidis K. (September 27-28, 2010). Απαιτήσεις Προσαρμογής Οδικών Δικτύων και Τροφοδότησης Μαθηματικού Υποδείγματος Δυναμικού Καταμερισμού της Κυκλοφορίας. Εφαρμογή στην Πόλη της Θεσσαλονίκης. 5th International Congress on Transportation Research, Volos, Greece.
33. Kehagias, D., Tzovaras D., Mavridou, E., **Kalogirou, K.**, Becker M. (2010). Implementing an open reference architecture based on web service mining for the integration of distributed applications and multi-agent systems. AAMAS 2010, Workshop on Agents and Data Mining Interaction, May 11, 2010. Toronto.
34. Kokkinos, J., & **Tyrinopoulos, Y.** (2010). Critical Assessment of Systems and Technologies for Supporting Urban Mobility – Investigation of their Degree of Exploitation in Greece. 5th International Congress on Transportation Research. Volos, Greece.
35. Kotsiourou, C., Pagle, K., Amditis, A., & **Gaitanidou, E.** (2010). Nomadic Devices in the vehicle environment: planning of Field Operational Tests in Greece. 17th ITS World Congress. Busan.
36. Leuteritz, J.-P., Widloither, H., & **Panou, M.** (2010). User interfaces and strategies for guidance of elderly in emergencies through nomadic devices. IST Africa 2010 Conference & Exhibition, May 19-21, 2010. Durban.
37. Mavridou, E., Tzovaras, D., **Bekiaris, E.**, **Gemou, M.**, Hassapis, G. (2010). A Data mining framework for CITARASA-based system. International Conference on Kansei Engineering and Emotion research 2010, KEER 2010, March 2-4, 2010. Paris.
38. Meinken, K., & **Bekiaris, E.** (2010). Access 2 All - Innovative HMI concepts for barrier-free travelling. 3rd International Conference on Applied Human Factors & Ergonomics, (AHFE International 2010), July 17-20, 2010. Miami.
39. Melcher V., Leuteritz, J.-P., **Panou, M.**, Leonidis, A. (2010). OASIS HMI: Design for Elderly - A Challenge. 3rd International Conference on Applied Human Factors and Ergonomics (AHFE '10), 17-20 July 2010. Miami.
40. **Mitsakis E.**, (2010). Combined Dynamic Traffic Assignment and Optimal Traffic Control models. EURO XXIV 2010, Lisbon, Portugal.
41. **Mitsakis, E.**, **Tyrinopoulos, Y.**, & Pein, I. (2010). Fostering Networking and Cooperation Opportunities Addressing Regions with Seasonal Traffic Peaks. *Transportation research Board Congress 2010*. Washington.
42. Moini, N., **Boile, M.**, Laventhal, W., & Theofanis, S. (2010). A Model to Estimate Container Dwell Time Using A Set of Determinants. TRB Annual Meeting. Washington DC.

43. Montanari, R., Spadoni, A., Bekiaris, E., & Nikolaou, S. (2010). SAFERIDER: CAN based architecture on 2-wheelers domain. 15th International Conference Road Safety on Four Continents, March 28-30, 2010. Abu Dhabi.
44. **Morfoulaki M., Chrysohoou E., Salanova J.**, (September 27-28, 2010). Development of a forecasting methodology for road network traffic data analysis using time series. 5th International Congress on Transportation Research, Volos, Greece.
45. **Morfoulaki M., Mitsakis E.**, (September 27-28, 2010). The Contribution of the Urban Mobility Management in the Trip Planning and the Environmental Upgrade. 5th International Congress on Transportation Research, Volos, Greece.
46. **Panou, M., Bekiaris, E., & Toliou, A.** (2010). ADAS module in driving simulation for training young drivers. 13th International IEEE Annual Conference on Intelligent Transportation Systems Submission, ITSC 2010, September 19-22, 2010. Madeira.
47. **Panou, M., Blythe, P., & Bekiaris, E.** (2010). Integrated safety & security for transportation hubs. 15th International Conference Road Safety on Four Continents, March 28-30, 2010. Abu Dhabi.
48. **Panou, M., Toliou, K., Bekiaris, E., Gaitanidou, E.**, (2010). Pedestrian and multimodal route guidance adaptation for elderly citizens. ITS-Africa 2010 Conference & Exhibition, May 19-21, 2010. Durban.
49. Pastor-Sanz, L., Fernandez-Rodriguez, M., Cabrera-Umpierrez, M., Arredondo, M., & **Bekiaris, E.** (2010). Prevention and management of risk conditions of elderly people through the home environment monitoring. 12th Mediterranean Conference on Medical and Biological Engineering and Computing, MEDICON 2010, May 27-30, 2010. Chalkidiki.
50. Pavlis, Y., **Giannopoulos, G.A.** (January 10-14 2010). Realizing the TransEuropean Road Network: Challenges, Approaches, and Intelligent Transportation Systems Applications for Providing Seamless Information to the European Traveler and Hauler, Transportation Research Board 89th Annual Meeting, Washington DC.
51. **Saharidis, G. K.**, Theofanis, S., & **Boile, M.** (2010). An Alternative Formulation for the Scheduling of Inbound Doors in Cross Docking Facilities. 5th International Congress on Transportation Research. Volos, Greece.
52. Schulze, H., **Margaritis, D., Toliou, K., & Portouli, E.** (2010). Driving under the influence of Drugs, Alcohol and Medicines - DRUID. 15th International Conference Road Safety on Four Continents, March 28-30, 2010. Abu Dhabi.
53. Theofanis, S., Betak, J., **Boile, M.**, & Lee, H. (2010). Growth Forecasting for Public Transit System Planning in a Changing World. 12th Annual New Jersey Department of Transportation Research Showcase. NJ.
54. **Toliou, K. & Margaritis, D.** (2010). Alcohol-impaired driving in vehicle simulated environment. ICTR 2010, 27 September 2010. Volos.
55. **Toliou, K., Panou, M., & Bekiaris, E.** (2010). Iterative ergonomic design and usability testing for elderly citizens applications. 3rd International Conference on Applied Human Factors & Ergonomics (AIFE International 2010), July 17-20, 2010. Miami.
56. **Toliou, K., Portouli, E., Margaritis, D., & Bekiaris, E.** (2010). An examination of the effects of Continuous Positive Airway Pressure (CPAP) treatment on the driving performance of patients suffering from sleep apnoea. 15th International Conference Road Safety on Four Continents, March 28-30, 2010. Abu Dhabi.
57. **Tyrinopoulos, Y., & Antoniou, C.** (2010). Analysis of Factors Affecting Public Transit User Satisfaction. 5th International Congress on Transportation Research. Volos, Greece.
58. **Tyrinopoulos, Y., & Giannopoulos, G.** (2010). Stimulating (sustainable) Freight Transport Synergies Between Latin America and Europe. XVI Pan - American Conference of Traffic and Transportation Engineering and Logistics. Lisbon.
59. **Tyrinopoulos, Y., Hiselious, W., & Kortsari, A.** (2010). An Innovative Method for the Classification of European Regions with Seasonal Transport Demand Variations. Transport Research Arena. Brussels.
60. **Tyrinopoulos, Y., Mitsakis, E., & Kortsari, A.** (2010). A Decision Support System for the Sustainable Handling of Seasonal Variations of Transport Demand. 13th International IEEE Conference on Intelligent Transportation Systems (ITSC 2010). Madeira, Portugal.
61. **Tyrinopoulos, Y., Mitsakis, E., & Kortsari, A.** (2010). Solutions for handling seasonal variations of transport demand – An introduction to the DELTA Decision Support Tool. 5th International Congress on Transportation Research. Volos, Greece.

Note: HIT staff in bold

ACTIVE PROJECTS IN 2010/ΕΝΕΡΓΑ ΕΡΕΥΝΗΤΙΚΑ ΕΡΓΑ ΤΟ 2010

| NO | ACRONYM | PROGRAMME / CONTRACT NO. | PROJECT TITLE | LEAD SCIENTIST | HIT BUDGET (in €) | START DAY END DAY | HIT'S ROLE |
|----|--------------|--|---|------------------|-------------------|---------------------------|-----------------------------|
| 1 | | SASTH – Municipality of Kalamaria – Anatoliki S.A. | Operation of the Mobility Center Network | G. Aifantopoulou | 12.000 | 06/07/2009 30/06/2010 | SUB-CONTRACTOR |
| 2 | | Ministry of Communication and Works of Cyprus | Provision of services for the Planning of Inter-Urban Public Transport in the Transeuropean Network (TEN-T) of Cyprus | G. Aifantopoulou | 81.487 | 26/10/2010- 25/11/2011 | SUB-CONTRACTOR |
| 3 | | Hellenic Republic Ministry of Education, Lifelong Learning and Religious Affairs | Study on Necessary Improvements of The School Trips' System in Order to Implement an Effective 21st Century School | G. Giannopoulos | 64.228 | 01/09/2010- 30/06/2011 | SUB-CONTRACTOR |
| 4 | | Municipality of Kalamaria | Operation of the Mobility Center Network in the Municipality of Kalamaria in 2010-2011 | G. Aifantopoulou | 10.000 | 01/07/2010- 30/06/2011 | SUB-CONTRACTOR |
| 5 | | Ministry of Communication and Works of Cyprus | Specialized study for the implementation of dedicated bicycle lanes along Makariou and Stasinou streets in the Central Area of Nicosia | G. Aifantopoulou | 128.652 | 04/2/2009- 31/10/2010 | SUB-CONTRACTOR |
| 6 | 2-BE-SAFE | STRIP | 2-wheeler behaviour and safety | E. Bekiaris | 287.421 | 01/01/2009- 31/12/2011 | PARTNER |
| 7 | 2DECIDE | Toolkit for sustainable decision making in ITS deployment_2decide | Toolkit for sustainable decision making in ITS deployment_2decide | E. Bekiaris | 44.034 | 01/10/2009- 31/11/2011 | PARTNER |
| 8 | ACCESS2ALL | 7 F.P. - Coordination Action (CA) | Mobility Schemes Ensuring Accessibility of Public Transport for All Users | E. Bekiaris | 160.645 | 01/12/2008- 30/11/2010 | PARTNER |
| 9 | ACCESSIBLE | 7 F.P. - Specific Targeted Research and Innovation Project (STRIP) | ACCESSIBLE-Accessibility Assessment Simulation Environment for New Applications Design and Development | E. Bekiaris | 372.000 | 01/09/2008- 31/08/2011 | TECHNICAL & QUALITY MANAGER |
| 10 | ACTIBIO | 7 F.P. - Specific Targeted Research and Innovation Project (STRIP) | ACTIBIO, UNOBTRUSIVE AUTHENTICATION USING ACTIVITY RELATED AND SOFT BIOMETRICS/ 215372 | E. Bekiaris | 260.000 | 01/03/2008- 28/2/2011 | QUALITY MANAGER |
| 11 | AEGIS | 7 F.P. - Integrated Project (IP) | Open Accessibility Everywhere: Groundwork, Infrastructure, Standards | E. Bekiaris | 1.538.136 | 01/06/2008- 31/12/2011 | COORDINATOR |
| 12 | BACK-GROUNDS | Interreg med | BACKGROUNDS | G. Aifantopoulou | 361.689 | 01/06/2009- 31/05/2012 | PARTNER |
| 13 | BESTPOINT | KOI: 7 F.P. TREN / SUB / 01-2009 | MOVE/SUB/2010/D3/300-1/SI2.569987 «BEST POINT» | E. Bekiaris | 43.108 | 01/09/2010- 31/08/2012 | PARTNER |
| 14 | CLOSER | 7 F.P. - Collaborative Project (CP) | Connecting Long and Short-distance networks for Efficient Transport | I. Tyrinopoulos | 160.933 | 01/01/2010- 31/12/2012 | PARTNER |
| 15 | DaCoTA | | Road safety Data Collection, Transfer and Analysis | E. Bekiaris | 43.520 | 01/02/2010- 31/07/2012 | SUB-CONTRACTOR |
| 16 | DELTA | EC- DG RTD Coordination Action (CA) | Concerted coordination for the promotion of efficient multimodal interfaces | I. Tyrinopoulos | 190.867 | 01/01/2009- 31/12/2010 | COORDINATOR |
| 17 | DETRA | 7 F.P. - Coordination and Support Action (CSA) - A.C. MODEL | Developing the European Transport Research Alliance | E. Bekiaris | 92.410 | 01/06/2010- 30/09/2012 | PARTNER |
| 18 | DRUID | EC FP 6 | Driving under the Influence of Drugs, Alcohol and Medicine | E. Bekiaris | 431.834 | 15/10/2006- 14/10/2010 | PARTNER |
| 19 | E-Freight | 7 F.P. - Collaborative Project (CP) | European E-freight Capabilities for Co-modal transport | M. Boile | 177.000 | 01/01/2010- 30/06/2013 | PARTNER |
| 20 | ENABLE | KOI: 7 F.P. - Coordination and Support Action (CSA) | Stimulate Sustainable Freight Transport Systems with Latin American Countries | I. Tyrinopoulos | 134.178 | 01/09/2009- 31/08/2011 | COORDINATOR |
| 21 | EOX | | Intelligent urban mobility management and traffic control system for the improvement of the urban environment quality in the central area of Thessaloniki's agglomeration | G. Aifantopoulou | 722.771 | 24/04/2009- 30/04/2012 | PARTNER |
| 22 | FERSI | | The Organisation Of Fersi | E. Bekiaris | 200.700 | 01/06/2008- 31/05/2011 | |
| 23 | FREIGHTWISE | EE | Management framework for Intelligent Inter-modal Transport | G. Giannopoulos | 272.052 | 01/11/2006- 30/04/2010 | PARTNER |

| NO | ACRONYM | PROGRAMME / CONTRACT NO. | PROJECT TITLE | LEAD SCIENTIST | HIT BUDGET (in €) | START DAY END DAY | HIT'S ROLE |
|----|--------------------------------------|---|--|------------------|-------------------|-------------------------|--------------------------------|
| 24 | FREILOT | ICT Policy Support Programme (ICT PSP) | Urban Freight Energy Efficiency Pilot | G. Aifantopoulou | 118.818 | 01/04/2009-31/03/2012 | PARTNER |
| 25 | HERMES | 7 F.P. - Collaborative Project (CP) | High Efficient and Reliable arrangeMEnts for CroSsmodal Transport | G. Aifantopoulou | 180.600 | 01/01/2010-31/12/2011 | PARTNER |
| 26 | INTERSTRESS | 7 F.P. - STRIP | Interreality in the Management and Treatment of Stress-Related Disorders | E. Bekiaris | 317.065 | 01/03/2010-28/02/2013 | PARTNER |
| 27 | LIMES | EE | Land/sea Integrated monitory for European security | G. Aifantopoulou | 28.300 | 01/12/2006-31/05/2010 | PARTNER |
| 28 | MARPOS | FP 7 Support Action | Maritime Policy Support | M. Boile | 187.184 | 01/12/2008-31/05/2011 | COORDINATOR |
| 29 | MLS-Πληροφορική ΑΕ | MLS-Πληροφορική ΑΕ | Provision of Special Services – inspection and analysis of certain traffic data | G. Aifantopoulou | 30.000 | 26/11/2009-31/05/2010 | SUB-CONTRACTOR |
| 30 | NOBEL | 7 F.P. - Collaborative Project (CP) | Neighbourhood Oriented Brokerage ELelectricity and monitoring system | E. Bekiaris | 222.460 | 01/02/2010-31/07/2012 | PARTNER |
| 31 | OASIS | FP 7 | Open Architecture for Accessible Services Integration and Standardisation | E. Bekiaris | 854.898 | 01/01/2008-31/12/2010 | TECHNICAL MANAGER |
| 32 | PERSONA | ANKO ΑΕ | PERceptive Spaces prOmoting iNdependent Aging «PERSONA» | E. Bekiaris | 20.000 | 02/04/2007-31/5/2010 | SUB-CONTRACTOR |
| 33 | PROLOGUE | 7 F.P. - Collaborative Project (CP) | Promoting real life Observations for Gaining Understanding of road behaviour in Europe | E. Bekiaris | 214.269 | 01/05/2009-30/07/2011 | PARTNER |
| 34 | REMOTE | | Remote health and social care for independent living of isolated elderly with chronic conditions | E. Bekiaris | 286.318 | 01/04/2009-31/03/2012 | TECHNICAL & SCIENTIFIC MANAGER |
| 35 | SAFERIDER | FP 7 | Advanced Telematics for enhancing the safety and comfort of motorcycle riders | E. Bekiaris | 424.000 | 01/01/2008-31/12/2010 | COORDINATOR |
| 36 | SAFESPOT | EE | Cooperative systems for road safety «Smart Vehicles on Smart Roads | G. Aifantopoulou | 200.845 | 01/01/2006-31/07/2010 | PARTNER |
| 37 | SAFEWAY-2SCHOOL | 7 F.P. - Collaborative Project (CP) | Integrated system for safe transportation of children to school | E. Bekiaris | 330.000 | 01/09/2009-31/08/2012 | TECHNICAL MANAGER |
| 38 | SAVE ME | KOI: 7 F.P. - Specific Targeted Research and Innovation Project (STRIP) | System and actions for Vehicles and transportation | E. Bekiaris | 520.834 | 01/01/2009-31/12/2011 | QUALITY MANAGER |
| 39 | SHLOW | FP7 SSA | Show me How Slow | G. Giannopoulos | 29.460 | 01/03/2008-28/02/2010 | PARTNER |
| 40 | SMART CM | FP 7 IP | Smart-Container Chain Management | G. Aifantopoulou | 700.147 | 01/08/2008-31/07/2011 | COORDINATOR |
| 41 | SMART-WAY | Galileo- Collaborative | Galileo based navigation in public transport systems with passenger interaction | I. Tyrinopoulos | 245.134 | 01/02/2010-31/01/2012 | PARTNER |
| 42 | TELEFOT | 7 F.P. - Integrated Project (IP) | Field Operational Tests of Aftermarket and Nomadic Devices in Vehicles | E. Bekiaris | 455.000 | 31/5/2012 01/06/2008 | PARTNER |
| 43 | UNIVERSAAL | IP | UNIVERSal open platform and reference Specification for Ambient Assisted Living | E. Bekiaris | 358.976 | 01/02/2010-31/01/2014 | PARTNER |
| 44 | VERITAS | 7 F.P. - Collaborative Project (CP) | Virtual and Augmented Environments and Realistic User Interactions To achieve Embedded Accessibility | E. Bekiaris | 647.734 | 01/01/2010-31/12/2013 | QUALITY MANAGER |
| 45 | VIAJEO | 7 F.P. - Collaborative Project (CP) | International demonstrations of platform for transport planning and travel information | I. Tyrinopoulos | 258.274 | 01/09/2009-31/08/2012 | PARTNER |
| 46 | VIRTHUALIS | EE | Virtual Reality and Human Factors Applications in Improving Safety | E. Bekiaris | 433.560 | 01/05/2005-31/05/2010 | PARTNER |
| 47 | Weather | 7 F.P. - Collaborative Project (CP) | Weather Extremes: Assessment of Impacts on Transport Systems and Hazards for European Regions | G. Aifantopoulou | 352.999 | 01/11/2009-30/04/2012 | PARTNER |
| 48 | Media Campaign on Road Safety Issues | Public dissemination of the Knowledge on Road Safety | M. Boile | 22.000 | | 01/09/2010-31/12/2013 | |